

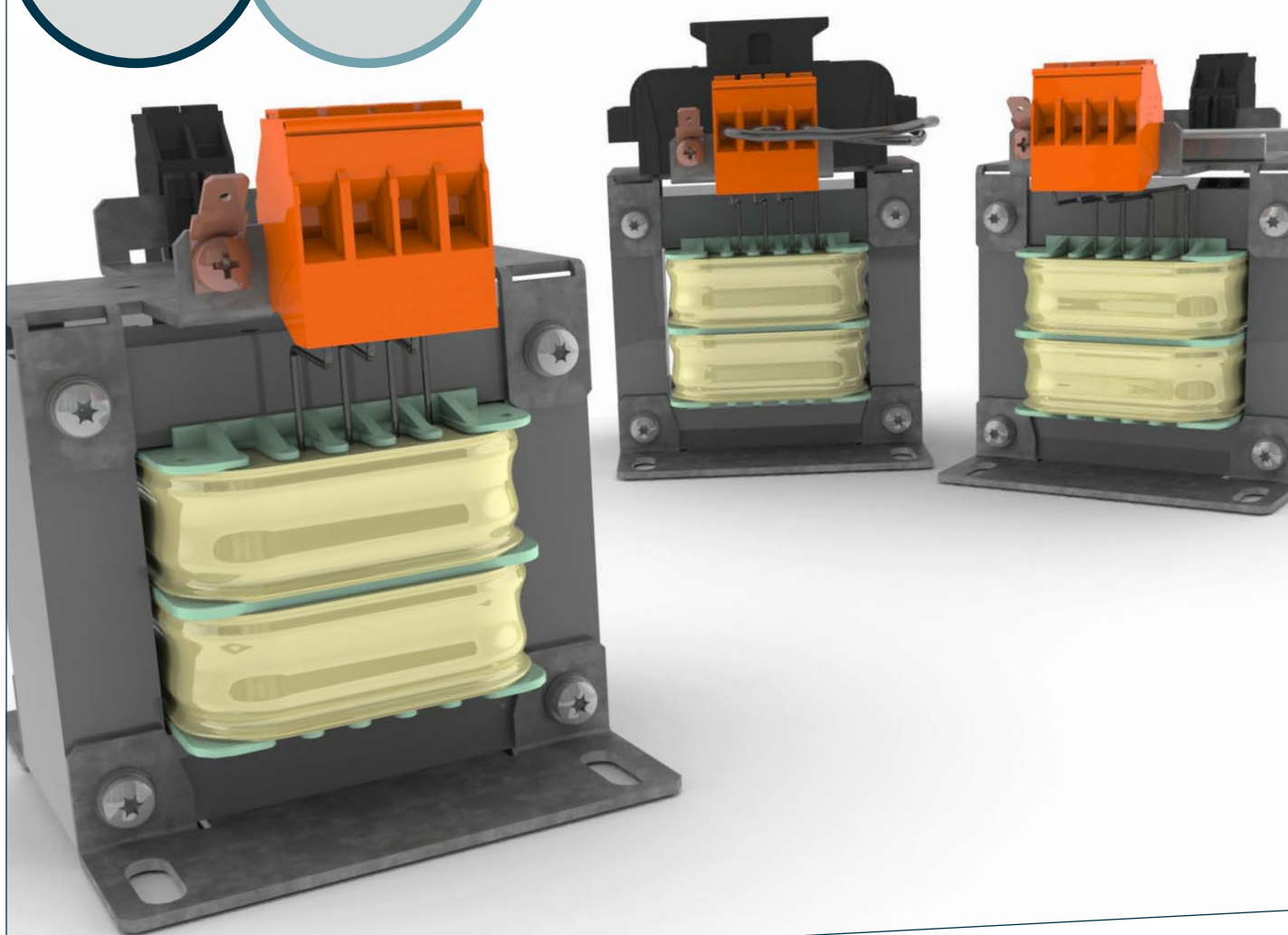
# CONTROL TRANSFORMERS CT

## TRANSFORMADORES DE CONTROL CT

Versions / Technical data  
Versiones / Datos técnicos

100 %  
FINGER-SAFE

UP TO  
2500 VA

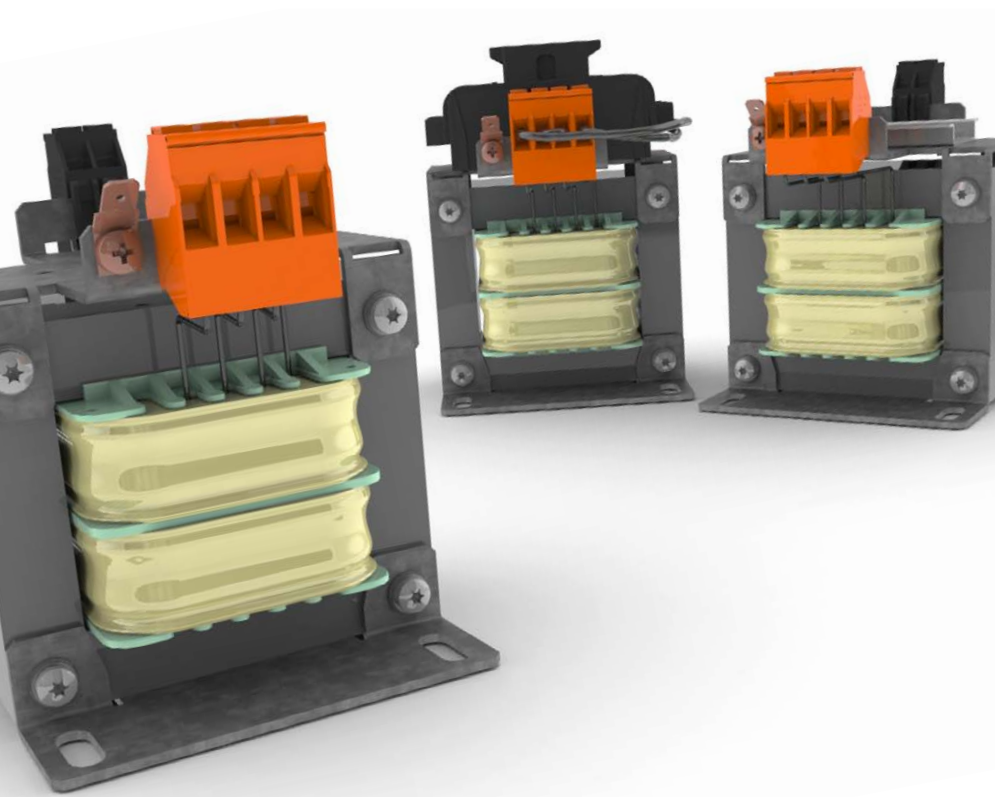


# CONTROL TRANSFORMERS

## TRANSFORMADORES DE CONTROL

BLOCK's new CT series of industrial control transformers is the perfect choice for general purpose and industrial applications. Primarily engineered for isolation, lighting or signal systems, the CT series provides an economical and efficient solution under regular and even under abnormal conditions. It ensures a continuous supply of your control circuits combined with a robust design.

La nueva serie de transformadores industriales de control CT de BLOCK es la opción perfecta para uso general y para aplicaciones industriales de carga. La serie CT está diseñado principalmente para el aislamiento, iluminación o sistemas de señal, y proporciona una solución eficiente y económica ante condiciones regulares e incluso bajo condiciones anormales. Garantiza un suministro continuo de sus circuitos de control combinado con un diseño robusto.



INSULATION  
CLASS  
AISLAMIENTO  
CLASE  
**B (266 °F)**

INPUT VOLTAGE  
TENSIÓN DE ENTRADA  
**240x480 VAC  
OR 600 VAC**

POWER  
POTENCIA  
**50 - 2500 VA**

AMBIENT  
TEMPERATURE  
TEMPERATURA  
AMBIENTE  
**104 °F**

APPROVALS  
CERTIFICACIONES  
**UL 5085-1/-2, CSA  
22.2  
IEC 61558-1  
IEC 61558-21**

FREQUENCY  
FRECUENCIA  
**50 - 60 HZ**

## HIGHLIGHTS

FUSED VERSION AVAILABLE  
VERSIÓN FUSIONADA  
DISPONIBLE

VERSIONS WITH DIN RAIL FOR  
ADDITIONAL COMPONENTS  
AVAILABLE

VERSIONES CON RIEL DIN  
PARA COLOCAR A PRESIÓN,  
MÁS COMPONENTES DISPO-  
NIBLES

100 % FINGER-SAFE  
PROTECCIÓN PARA LOS  
DEDOS 100 %

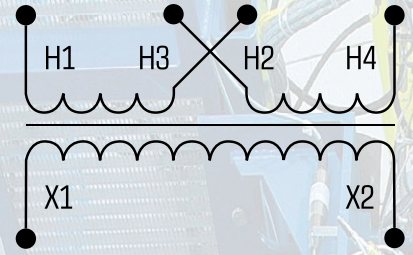
JUMPERS INCLUDED FOR  
PRIMARY VOLTAGE SELECTION  
PUENTES INCLUIDOS PARA LA  
SELECCIÓN DE VOLTAJE  
PRIMARIO

UP TO 2500 VA  
HASTA 2500 VA



# TECHNICAL DATA

## DATOS TÉCNICOS



### GROUP A GRUPO A

Input voltage: **240 x 480 Vac**  
Tensión de entrada: **240 x 480 V de CA**

Output voltage: **24 Vac**  
Tensión de salida: **24 V de CA**

VA Rating Potencias de VA	Order number # de parte a ordenar	Dimension picture Imágen de las dimensiones	Output Amps Amplificadores de salida	Overall dimensions Dimensiones totales			Fused dimensions Dimensiones fundidas		Weight (lbs) Peso (lbs)
				A	B	C	A	C	
50	CT-005-048-24-x	1	2.08	2.60	3.15	3.65	2.98	3.76	2.20
75	CT-007-048-24-x	1	3.12	3.07	3.11	4.04	3.07	4.15	2.43
100	CT-010-048-24-x	1	4.17	3.07	3.23	4.04	3.07	4.15	3.31
150	CT-015-048-24-x	2	6.25	3.78	3.94	4.63	3.78	4.74	4.85
200	CT-020-048-24-x	2	8.33	3.78	4.25	4.63	3.78	4.74	6.17
250	CT-025-048-24-x	2	10.4	3.78	4.80	4.63	3.78	4.74	7.72
300	CT-030-048-24-x	2	12.5	4.72	4.09	5.42	4.72	5.53	8.82
350	CT-035-048-24-x	2	14.6	4.72	4.80	5.42	4.72	5.53	11.02

### GROUP B GRUPO B

Input voltage: **240 x 480 Vac**  
Tensión de entrada: **240 x 480 V de CA**

Output voltage: **120 Vac**  
Tensión de salida: **120 V de CA**

VA Rating Potencias de VA	Order number # de parte a ordenar	Dimension picture Imágen de las dimensiones	Output Amps Amplificadores de salida	Overall dimensions Dimensiones totales			Fused dimensions Dimensiones fundidas		Weight (lbs) Peso (lbs)
				A	B	C	A	C	
50	CT-005-048-12-x	1	0.42	2.60	3.15	3.65	2.98	3.76	2.20
75	CT-007-048-12-x	1	0.63	3.07	3.11	4.04	3.07	4.15	2.43
100	CT-010-048-12-x	1	0.83	3.07	3.23	4.04	3.07	4.15	3.31
150	CT-015-048-12-x	2	1.25	3.78	3.94	4.63	3.78	4.74	4.85
200	CT-020-048-12-x	2	1.67	3.78	4.25	4.63	3.78	4.74	6.17
250	CT-025-048-12-x	2	2.08	3.78	4.80	4.63	3.78	4.74	7.72
300	CT-030-048-12-x	2	2.50	4.72	4.09	5.42	4.72	5.53	8.82
350	CT-035-048-12-x	2	2.92	4.72	4.80	5.42	4.72	5.53	11.02
500	CT-050-048-12-x	2	4.17	4.72	5.71	5.42	4.72	5.53	14.99
750	CT-075-048-12-x	2	6.25	5.91	5.51	6.41	5.91	6.51	21.61
1000	CT-100-048-12-x	2	8.33	6.85	5.71	7.21	6.85	7.32	24.69
1500	CT-150-048-12-x	3	12.5	7.56	6.50	7.80	7.56	7.91	36.82
2000	CT-200-048-12-x	3	16.7	7.56	7.09	7.97	7.56	7.97	46.3
2500	CT-250-048-12-x	3	20.8	7.56	7.48	7.97	7.56	7.97	56.88

x= 0: Standard version

- 1: 3-pole fuseblock included, finger-safe through additional cover
- 2: DIN rail option for additional components

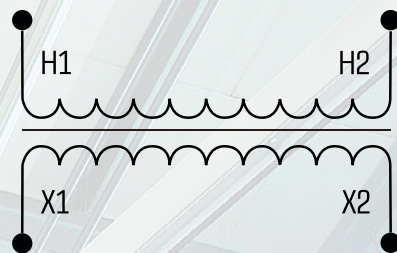
x= 0: Versión estándar

- 1: Bloque de fusibles de 3 polos incluido, seguro para los dedos a través de la cubierta adicional
- 2: Con riel DIN para colocar a presión, más componentes

**GROUP C**  
**GRUPO C**

Input voltage: **600 Vac**  
Tensión de entrada: **600 V de CA**

Output voltage: **24 Vac**  
Tensión de salida: **24 V de CA**



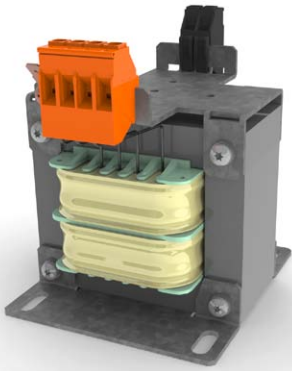
VA Rating Potencias de VA	Order number # de parte a ordenar	Dimension picture Imágen de las dimensiones	Output Amps Amplificadores de salida	Overall dimensions Dimensiones totales			Fused dimensions Dimensiones fundidas		Weight (lbs) Peso (lbs)
				A	B	C	A	C	
50	CT-005-060-24-x	1	2.08	2.60	3.15	3.65	2.98	3.76	2.20
75	CT-007-060-24-x	1	3.12	3.07	3.11	4.04	3.07	4.15	2.43
100	CT-010-060-24-x	1	4.17	3.07	3.23	4.04	3.07	4.15	3.31
150	CT-015-060-24-x	2	6.25	3.78	3.94	4.63	3.78	4.74	4.85
200	CT-020-060-24-x	2	8.33	3.78	4.25	4.63	3.78	4.74	6.17
250	CT-025-060-24-x	2	10.4	3.78	4.80	4.63	3.78	4.74	7.72
300	CT-030-060-24-x	2	12.5	4.72	4.09	5.42	4.72	5.53	8.82
350	CT-035-060-24-x	2	14.6	4.72	4.80	5.42	4.72	5.53	11.02

**GROUP D**  
**GRUPO D**

Input voltage: **600 Vac**  
Tensión de entrada: **600 V de CA**

Output voltage: **120 Vac**  
Tensión de salida: **120 V de CA**

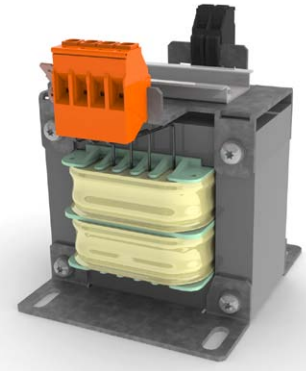
VA Rating Potencias de VA	Order number # de parte a ordenar	Dimension picture Imágen de las dimensiones	Output Amps Amplificadores de salida	Overall dimensions Dimensiones totales			Fused dimensions Dimensiones fundidas		Weight (lbs) Peso (lbs)
				A	B	C	A	C	
50	CT-005-060-12-x	1	0.42	2.60	3.15	3.65	2.98	3.76	2.20
75	CT-007-060-12-x	1	0.63	3.07	3.11	4.04	3.07	4.15	2.43
100	CT-010-060-12-x	1	0.83	3.07	3.23	4.04	3.07	4.15	3.31
150	CT-015-060-12-x	2	1.25	3.78	3.94	4.63	3.78	4.74	4.85
200	CT-020-060-12-x	2	1.67	3.78	4.25	4.63	3.78	4.74	6.17
250	CT-025-060-12-x	2	2.08	3.78	4.80	4.63	3.78	4.74	7.72
300	CT-030-060-12-x	2	2.50	4.72	4.09	5.42	4.72	5.53	8.82
350	CT-035-060-12-x	2	2.92	4.72	4.80	5.42	4.72	5.53	11.02
500	CT-050-060-12-x	2	4.17	4.72	5.71	5.42	4.72	5.53	14.99
750	CT-075-060-12-x	2	6.25	5.91	5.51	6.41	5.91	6.51	21.61
1000	CT-100-060-12-x	2	8.33	6.85	5.71	7.21	6.85	7.32	24.69
1500	CT-150-060-12-x	3	12.5	7.56	6.50	7.80	7.56	7.91	36.82
2000	CT-200-060-12-x	3	16.7	7.56	7.09	7.97	7.56	7.97	46.3
2500	CT-250-060-12-x	3	20.8	7.56	7.48	7.97	7.56	7.97	56.88



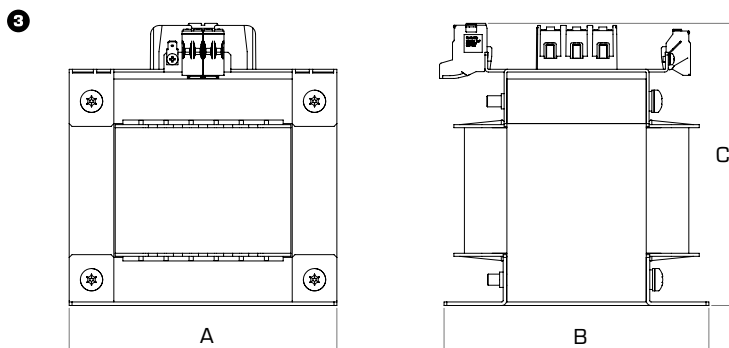
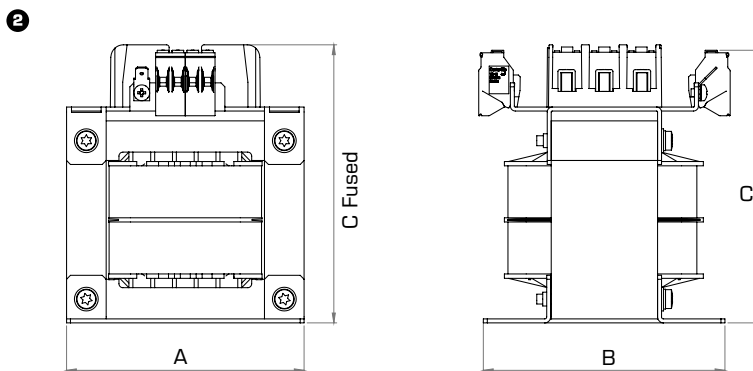
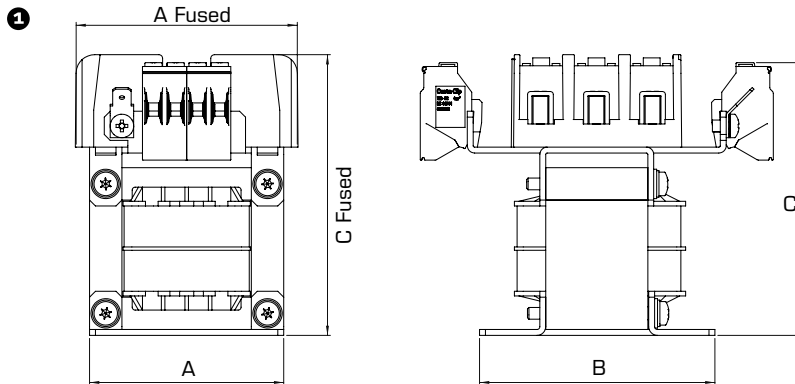
Standard version (-0)  
Versión estándar (-0)



Fused version (-1)  
Versión fusionada (-1)



With DIN rail for additional components (-2)  
Con riel DIN para colocar a presión, más componentes (-2)



A GLOBAL COMPANY  
UNA COMPAÑÍA GLOBAL



Headquarters and  
production site



Production  
sites



Subsidiaries



International  
agencies



Manufacturing  
Representatives

Factory, USA

**BLOCK**   
blockusa.com

**BLOCK**  **BLOCKSMOY** 



Factory 1, Germany



Factory 2, Germany

**BLOCK USA, Inc.**  
10632 W. Grand Avenue, Franklin Park • IL 60131 • USA  
Phone +1 847 260 9050 • Fax +1 847 260 9079  
info@blockusa.com • www.blockusa.com